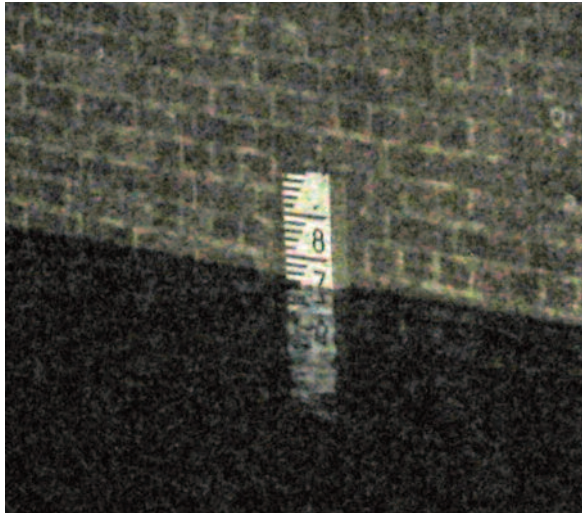


Snape River Wall (North side,FC7) flood damage 6th December 2013

Overnight 5th/6th December

I was at Snape Bridge from about 12.30 until 02.35 when the water appeared to have reached its peak. The following photographs give an impression of the surge at Snape Bridge.



Tidal gauge on Snape Bridge at 12.38am. Reading just under 7.7.



Overtopping starting at 12.41am about 150m East from Snape Bridge. This, taken with the gauge readings should give an indication of total overtopping levels through the surge. Approx grid ref TM 3931 57632.

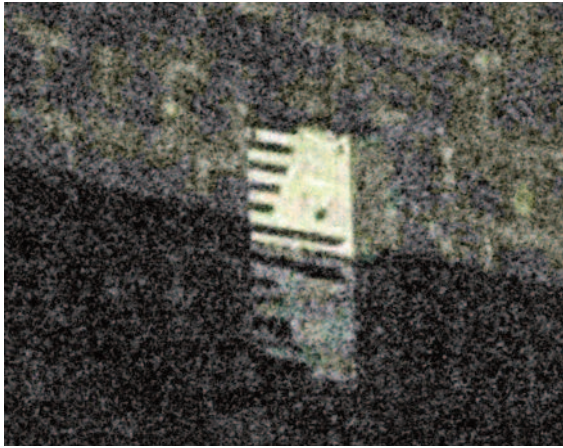


Maltings wall under bar at 01.01am

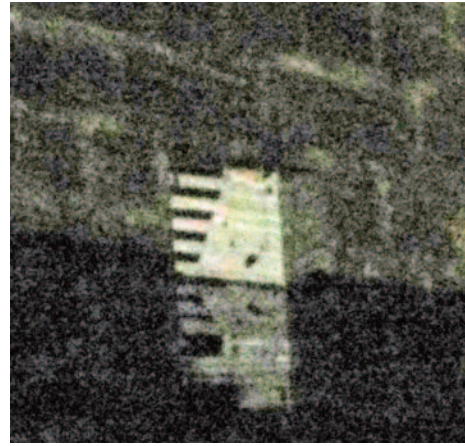


River boat at the quay 01.14am





Snape Bridge gauge at 01.25am



Snape Bridge gauge at 01.45am



Snape sluice at 01.31am. The banks on both sides of the river between the road and the sluice were just beginning to overtop.



Snape Bridge gauge at 02.03am
The water is just beginning to recede

The water continued to rise in Snape village until about 3.30am at which point presumably the river had fallen enough to stop overtopping the bank.

The morning after: damage to the path on the Snape north bank wall.



Showing position of normal high water on Bridge gauge.



On the higher areas where there was least overtopping, the hoggin has been scoured away showing the scalped clay bank underneath and the raised grass ridges on either side. Contrary to our report in the spring, there is no geotextile between the hoggin and the underlying clay. There is nothing to bind the hoggin to the clay layer.



in places the inner grass bank has collapsed with the hoggin sucked away



Further collapse of inner grass bank and hoggin.



The bend at TM 3969 5752 shows the most serious collapse with the inner grass bank collapsed and the hoggin path starting to be undercut.



The construction of the path is clearly seen at the area of most damage.



The inner bank has collapsed along the whole length where we expressed concerns in the spring over its steepness (looking SE towards the bend at TM3969 5752).



Maximum area flooded to the east of Bridge Road. Approximately 39 hectares/96 acres



Points where the inside top of the bank has washed away.

Yellow crosses mark approximate ends of overtopping.

Flags mark west ends of collapses, circles mark east ends.

Total length collapsed approximately 115 yards/105 metres..